
Comfort-Aire®

Century®

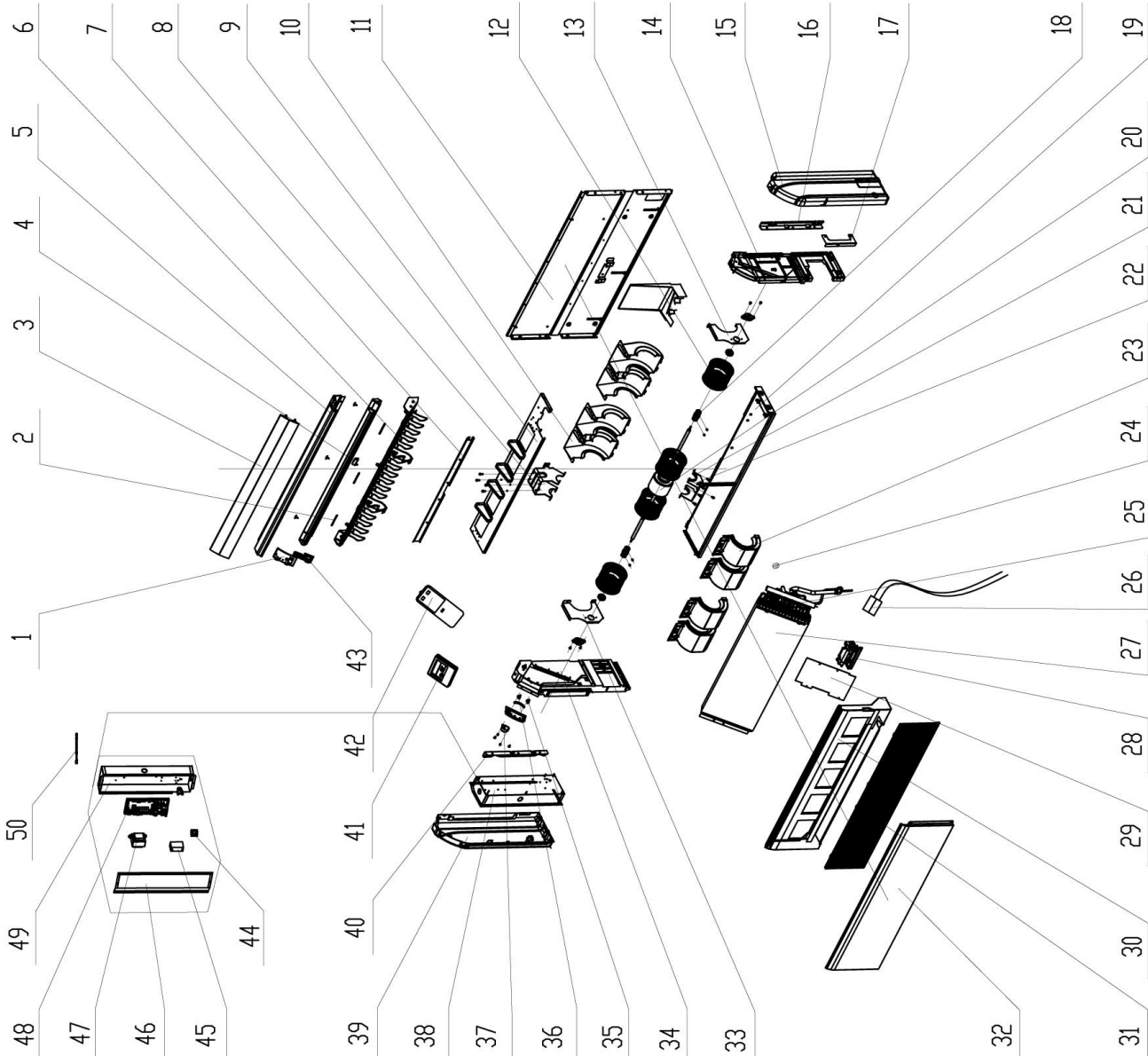
MARS
Delivering Confidence

REPLACEMENT PARTS LIST

InverterFlex Series®
Floor & Ceiling Console Mini-Split
B-VFH09UA-1
Heat Pumps

EXPLODED VIEW

50	Room Sensor
49	Electric Box
48	Main Board
47	Transformer
46	Electric Box Cover
45	Capacitor CBB61
44	Terminal Board
43	Display Board
42	Remote Controller
41	Display Board
40	Installation Supporting Frame
39	Left Cover Plate
38	Electric Box Assy
37	Step Motor
36	Rotating Shaft
35	Rotating Shaft
34	Left Side Plate Sub-Assy
33	Support 2
32	Top Cover Board Sub-assy
31	Front Grill sub-assy
30	Water Tray Assy
29	Connection Board
28	Press Plate of Water Lead flume
27	Evaporator Assy
26	Sensor
25	Filter 2
24	Cable-Cross Loop
23	Rear volute casing
22	Bar Clasp Sub-assy
21	Bar Clasp
20	Fan Motor
19	Rear Connecting Plate
18	Joint Slack
17	Connection Board
16	Installation Supporting Frame
15	Right Cover Plate
14	Right Side Plate Sub-Assy
13	Support 1
12	Centrifugal fan
11	Rear side plate assy
10	Front volute casing
9	Mid-clapboard sub-assy
8	Supporter
7	Air Lead Plate sub-assy
6	Base Frame
5	Front Connecting Plate
4	Rotating Shaft
3	Guide Louver
2	Louwer Clamp
1	Fixed Mount



REPLACEMENT PARTS

Location	Part Name	Quantity	Part No.
1	Fixed Mount	1	26909426R
2	Louver Clamp	2	26112127
3	Guide Louver	2	10619403
4	Rotating Shaft	4	26909430
5	Front Connection Plate	1	01349414P
6	Base Frame	1	26909448
7	Induced air plate subassembly	1	02229418
8	Supporter	1	01805288
9	Mid Clapboard Assy	1	01249428
10	Front Volute Casing	4	26905205
11	Rear Side Plate Assy	1	01319440
12	Centrifugal Fan	4	10425200
13	Support 1	1	01809417
14	Right Side Plate Sub-Assy	1	01319429
15	Right Cover Plate	1	26909444
16	Installation Supporting Frame	1	01809402
17	Connection Board	1	02229406
18	Joint Slack	2	73018731
19	Rear Connection board	1	01349422
20	Fan Motor	1	1570940901
21	Bar Clasp	1	70818405
22	Bar Clasp sub-assy	1	70815201
23	Rear Volute Casing	4	26905206
24	Cable Cross Loop	1	76514201
25	Filter	1	07216221
26	Temperature Sensor	1	3900019822
27	Evaporator Assy	1	01029482
28	Plate Board of Water Releasing Flume	1	26909442
29	Connection Board	1	01344115
30	Water Tray Assy	1	01289404
31	Front Grill sub-assy	2	01579403
32	Top Cover Board Sub-assy	1	01269409
33	Support 2	1	01809418
34	Left Side Plate Sub-Assy	1	0131942801
35	Rotating Shaft	1	26909412
36	Rotating Shaft	1	26909413
37	Stepping Motor	1	1521240206
38	Electric Box Assy	1	02404651
39	Left Cover Plate	1	26909443
40	Installation Supporting Frame	1	01809401
41	Display Board	1	30296317_L08294
42	Remote Controller	1	305100501_L08294
43	Display Board	1	30294220
44	Terminal Board	1	420111041
45	Capacitor CBB61	1	33010089
46	Electric Box Cover	1	01429420
47	Transformer	1	43110257
48	Main Board	1	30226350
50	Temperature Sensor	1	390001978G
Not Shown	Carton	1	51029945135

Due to ongoing product improvements, specifications and dimensions are subject to change and correction without notice or incurring obligations. Determining the application and suitability for use of any product is the responsibility of the installer. Additionally, the installer is responsible for verifying dimensional data on the actual product prior to beginning any installation preparations.

Incentive and rebate programs have precise requirements as to product performance and certification. All products meet applicable regulations in effect on date of manufacture; however, certifications are not necessarily granted for the life of a product. Therefore, it is the responsibility of the applicant to determine whether a specific model qualifies for these incentive/rebate programs.

Comfort-Cire[®] 

1900 Wellworth Ave., Jackson, MI 49203 • Ph. 517-787-2100 • www.marsdelivers.com

